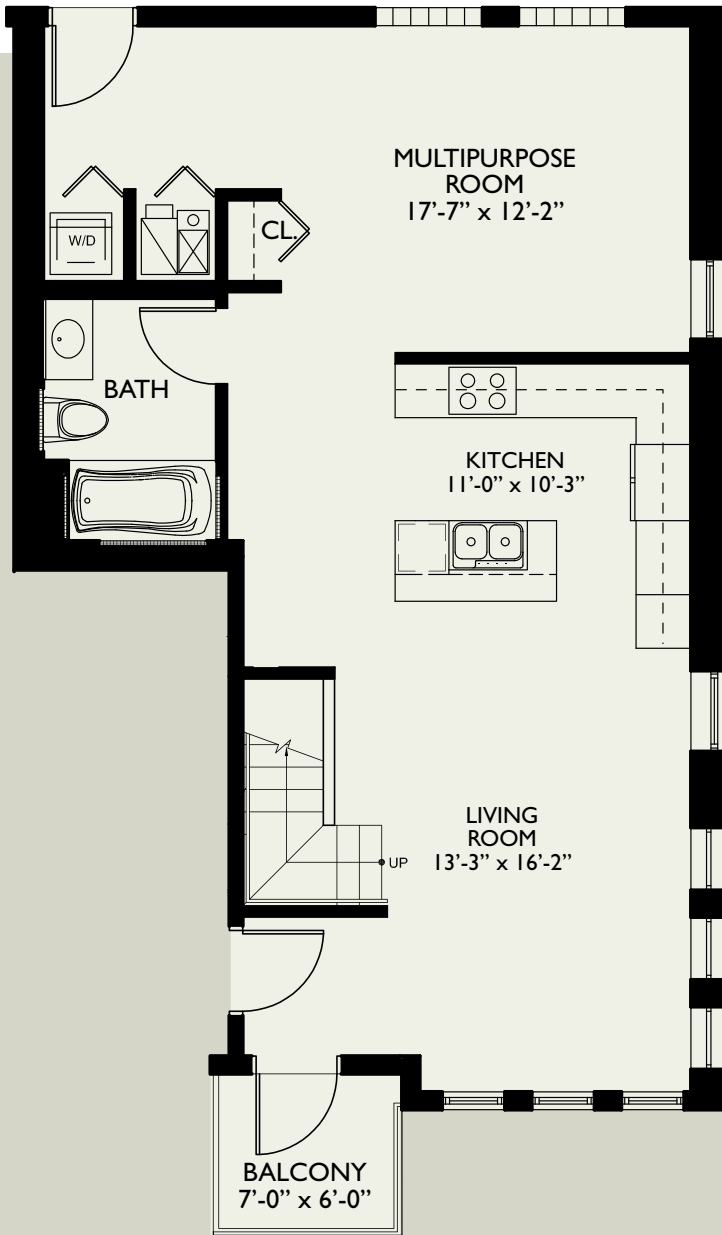


Plan C4

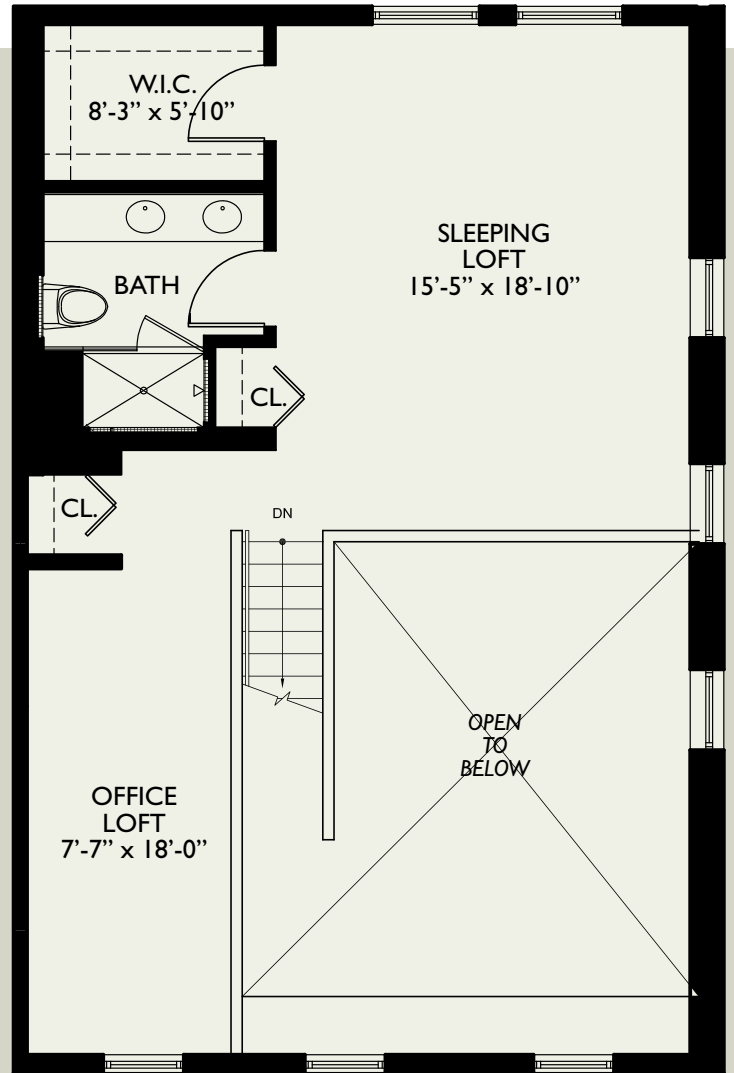
unit 3401

The Front St
LOFTS
of Lemont

1,706 sq. ft.



Lower Level



Upper Level



Please note that specifications, equipment, dimensions and prices are subject to change without notice.
*Square Footage does not include balcony/patio.
All dimensions are approximate.

Availability Limited! Call Today!

630.243.6162

102 Stephen Street • Lemont, IL 60439

www.lemontlofts.com web

mdewitt@lemontlofts.com email