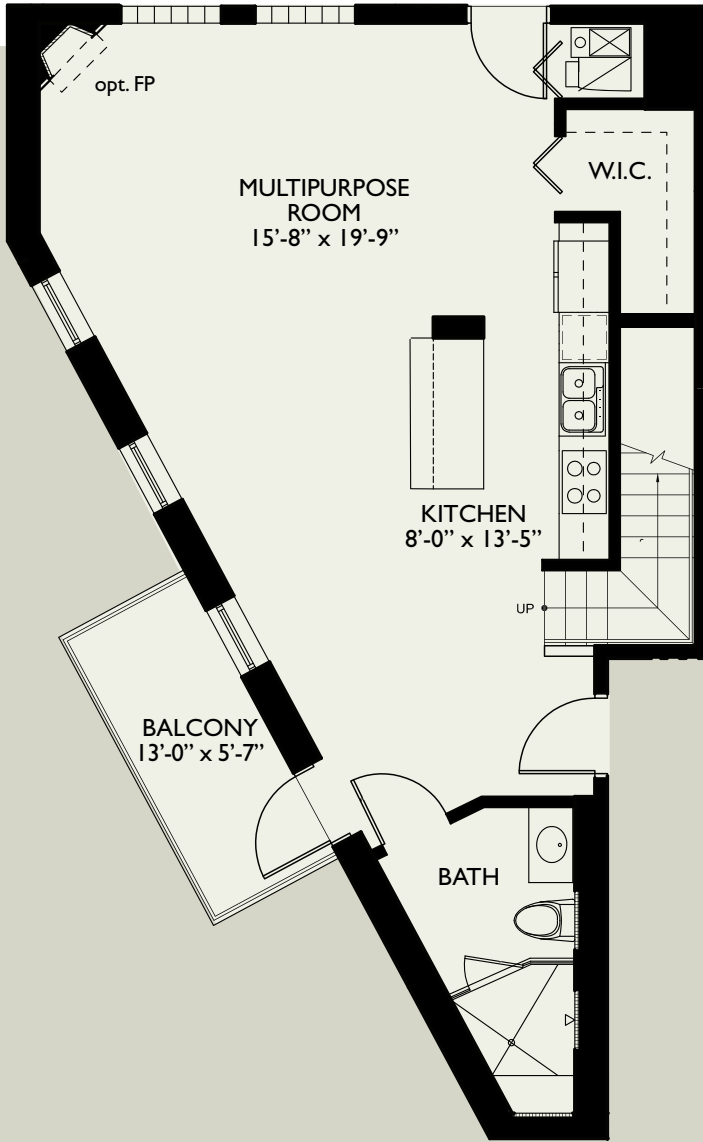


Plan C3.1

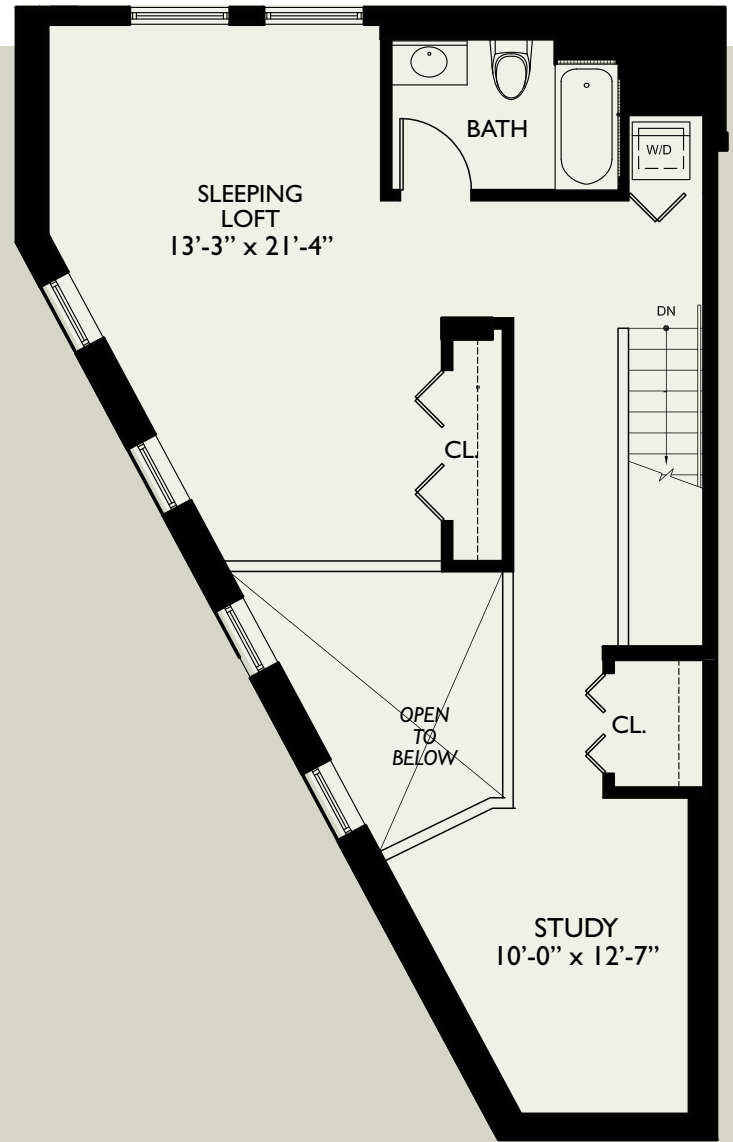
unit 1401

The **Front St**
LOFTS
of Lemont

1,552 sq. ft.



Lower Level



Upper Level



Please note that specifications, equipment, dimensions and prices are subject to change without notice.
*Square Footage does not include balcony/patio.
All dimensions are approximate.

Availability Limited! Call Today!

630.243.6162

102 Stephen Street • Lemont, IL 60439

www.lemontlofts.com web

mdewitt@lemontlofts.com email